

ADVENTURER'S DIGEST

MAY 2022,
ISSUE 1

*The newsletter
of the Świdnik Academy of geography*

What's inside this issue:

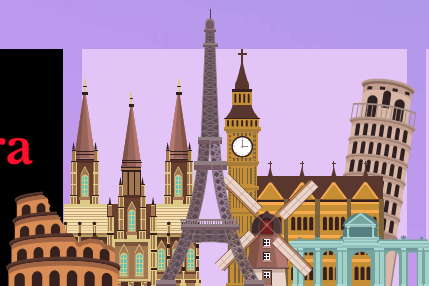
WORLD MAP TRAVEL





In the issue:

**Aleksandra
Szymuś**



EUROPE



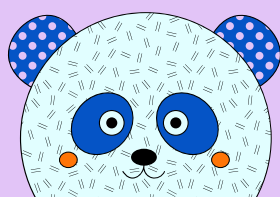
**Maksymilian
Królik**



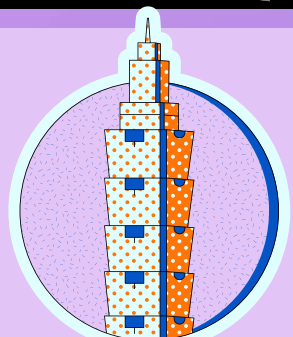
**Oliwia
Kapitan**



**Julia
Kwaśny**



CHINA



TAIWAN

**Joanna
Trześniak**

*Pomysł stworzenia gazetki szkolnej
"World Map Travel" powstał
w ramach programu Erasmus+.*

Celem głównym projektu było podniesienie jakości kształcenia z zakresu: pracy z uczniem uzdolnionym, wykorzystania innowacyjnych metod motywowania i wychowania, usprawnienia nauczania dwujęzycznego.

“Uczenie się innego języka jest nie tylko uczeniem się innych słów na te same rzeczy, ale także uczeniem się innego sposobu myślenia o rzeczach.” – Flora Lewis

Dwujęzyczność i nauczanie innowacyjne kluczem do przyszłości



SZKOŁA PODSTAWOWA NR 7
im. Żołnierzy Armii Krajowej
w Świdniku



Erasmus+



Technologie
informacyjno-
komunikacyjne



KAPITAŁ LUDZKI
NARODOWA STRATEGIA SPÓJNOŚCI



Fundacja Rozwoju Systemu Edukacji

2019 - 2022

Projekt realizowany przez nauczycieli SP 7 jest finansowany przez Unię Europejską w ramach programu Erasmus+.

Author: Aleksandra Szymuś



One day I started a balloon trip around Europe. I started from the town with the second largest building in Poland in terms of total height. My balloon lifted me west. I managed to take a photo of this building from a bird's eye view. Do you recognize it?



Can you complete the sentences?

Task 1.

1. The lowest areas in Europe are and
2. The longest river in Europe is
3. Which European countries are located in the Western Hemisphere
4. On the bank of which river lies the capital of Italy - Rome:

I landed at Potsdamer Platz then took a taxi to see the Brandenburg Gate. It was nice to talk to the driver who told me that:

- This country was the first to introduce daylight saving time in 1916.
- Students have a good time here, because the school uses grades in the opposite way than in Poland - the lowest grade is 6, and the best is 1.

What city am I in?



Task 2.

Select the picture that shows the Brandenburg Gate.

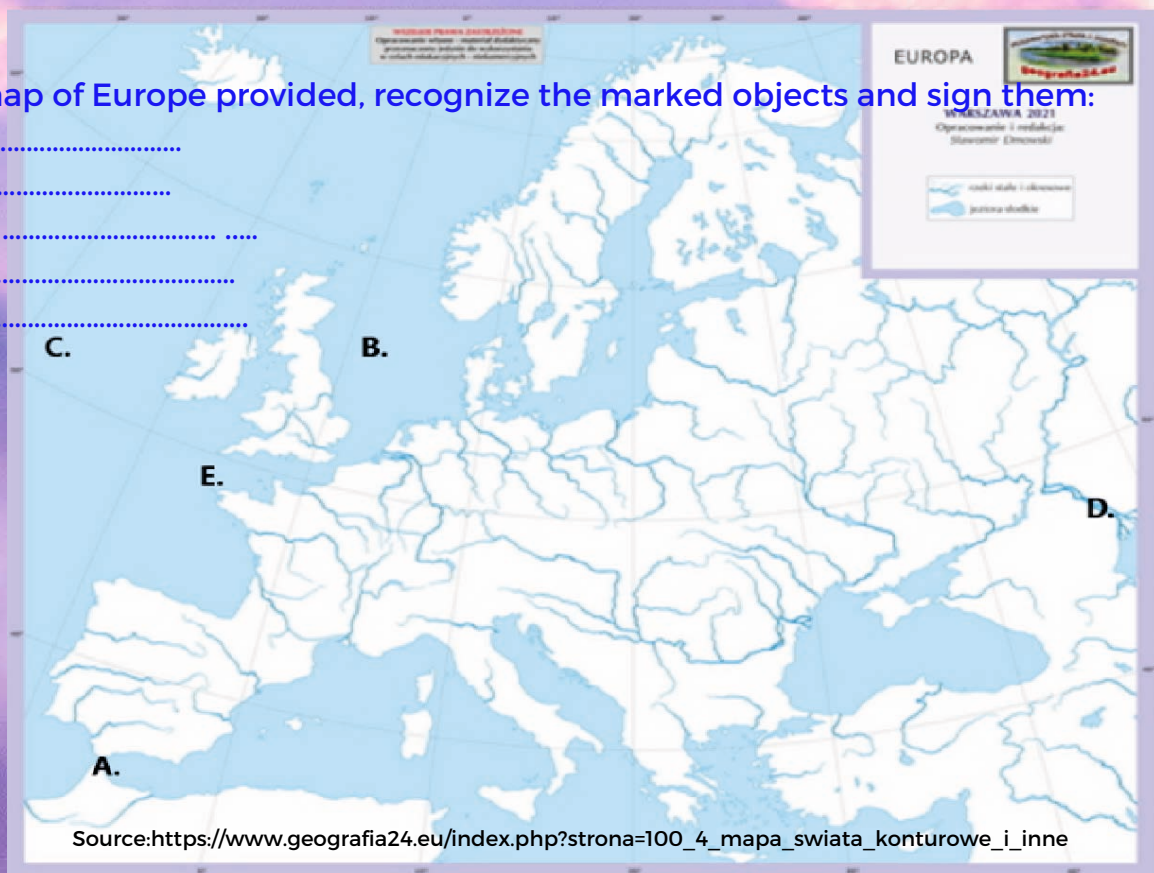


Then I headed north and stopped at 57°N and 13°E. I visited the capital by a water tram. The tram cruise gave me the opportunity to see many interesting bridges and bridges. From the deck of the tram, while sailing through numerous canals, I could admire extremely picturesque tenement houses. In the distance, I saw the Royal Opera House. It was designed by Henning Larsen. It is one of the most modern opera houses in the world. Do you already know what capital I am in?

Task 3.

On the map of Europe provided, recognize the marked objects and sign them:

- A. Strait
- B. Sea
- C. Ocean
- D. River
- E. Canal



The next day I went by bus to the capital of tulips and cheese. In this capital city, I admired the views while cycling. This city delighted me with a mixture composed of land and water. Churches soaring up at the sky, old tenement houses, galleries full of masterpieces of brush masters, picturesque streets and canals cut by a thousand bridges can make you dizzy. What city is it about?

Task 4.

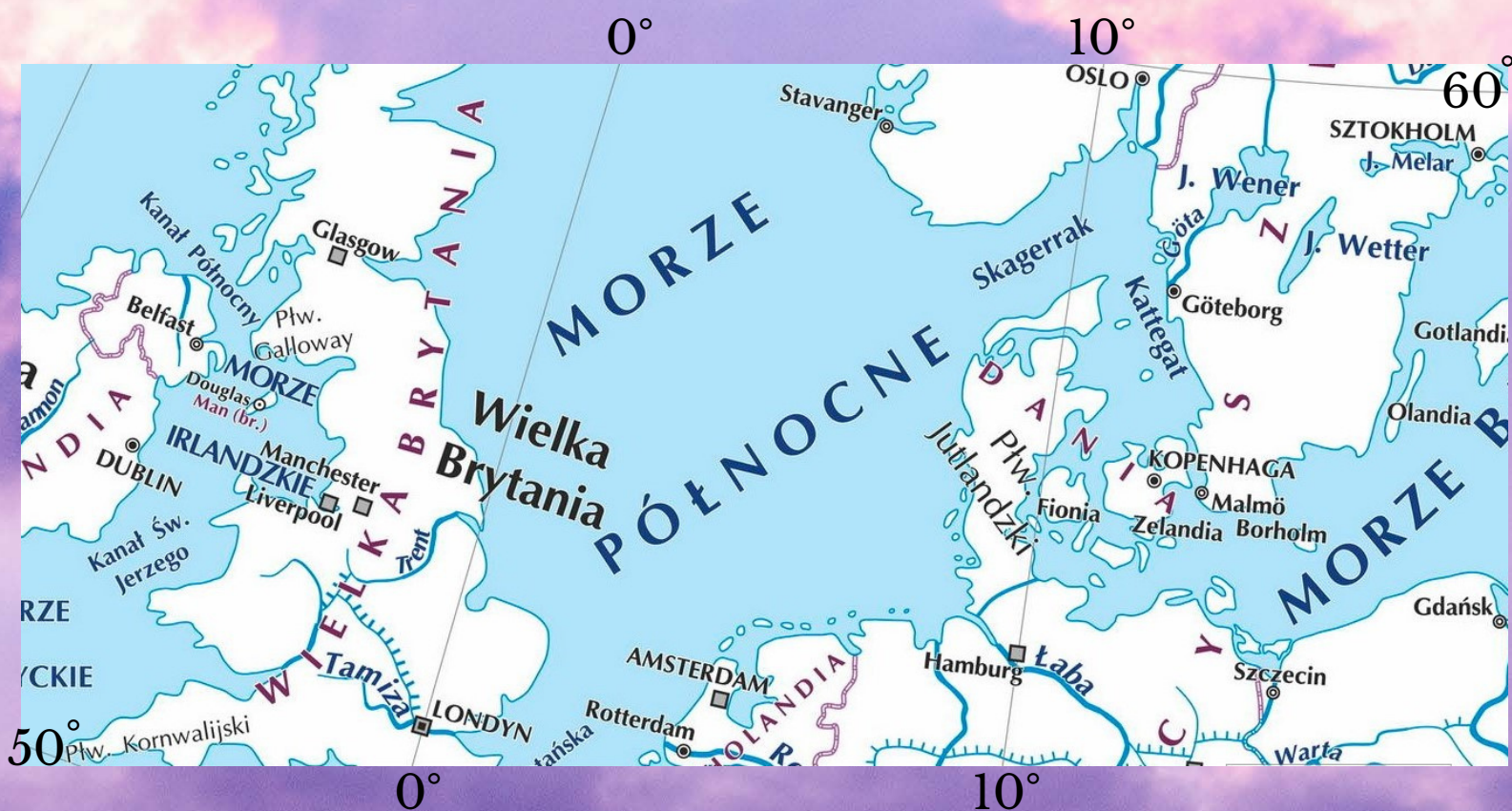
Enter the name of the state and capital. You will recognize this country by its contour, and you will decode the capital by the coordinates $04^{\circ}54'E$, $52^{\circ}22'N$.



From the country of tulips and windmills, I flew to the capital, which is located on the Seine. There I admired the views from the Eiffel Tower. By eating a croissant and drinking coffee, I solved the task.

Task 5.

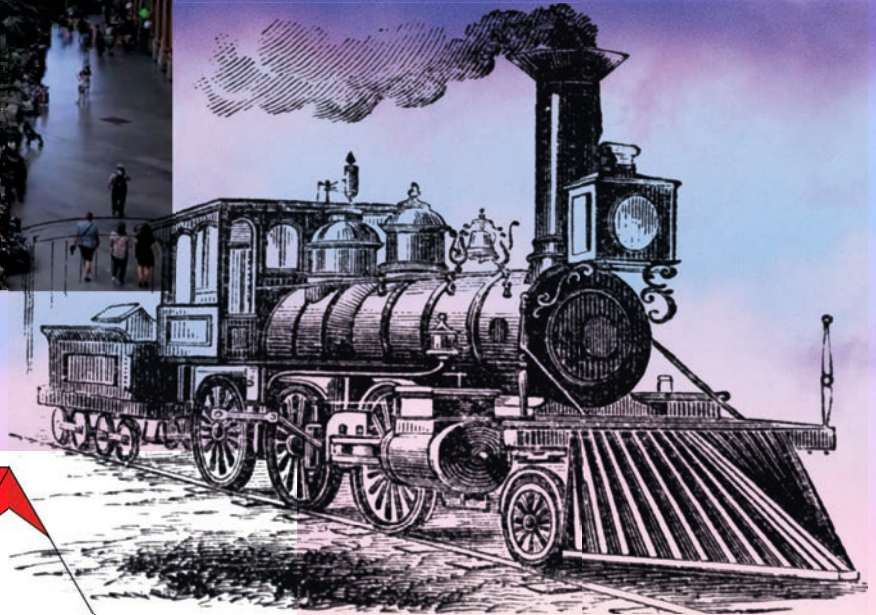
Enter the coordinates of this capital city by looking at the map below. Then answer what time is in this city, if in Warsaw ($21^{\circ}N$) it is 8.00 am.



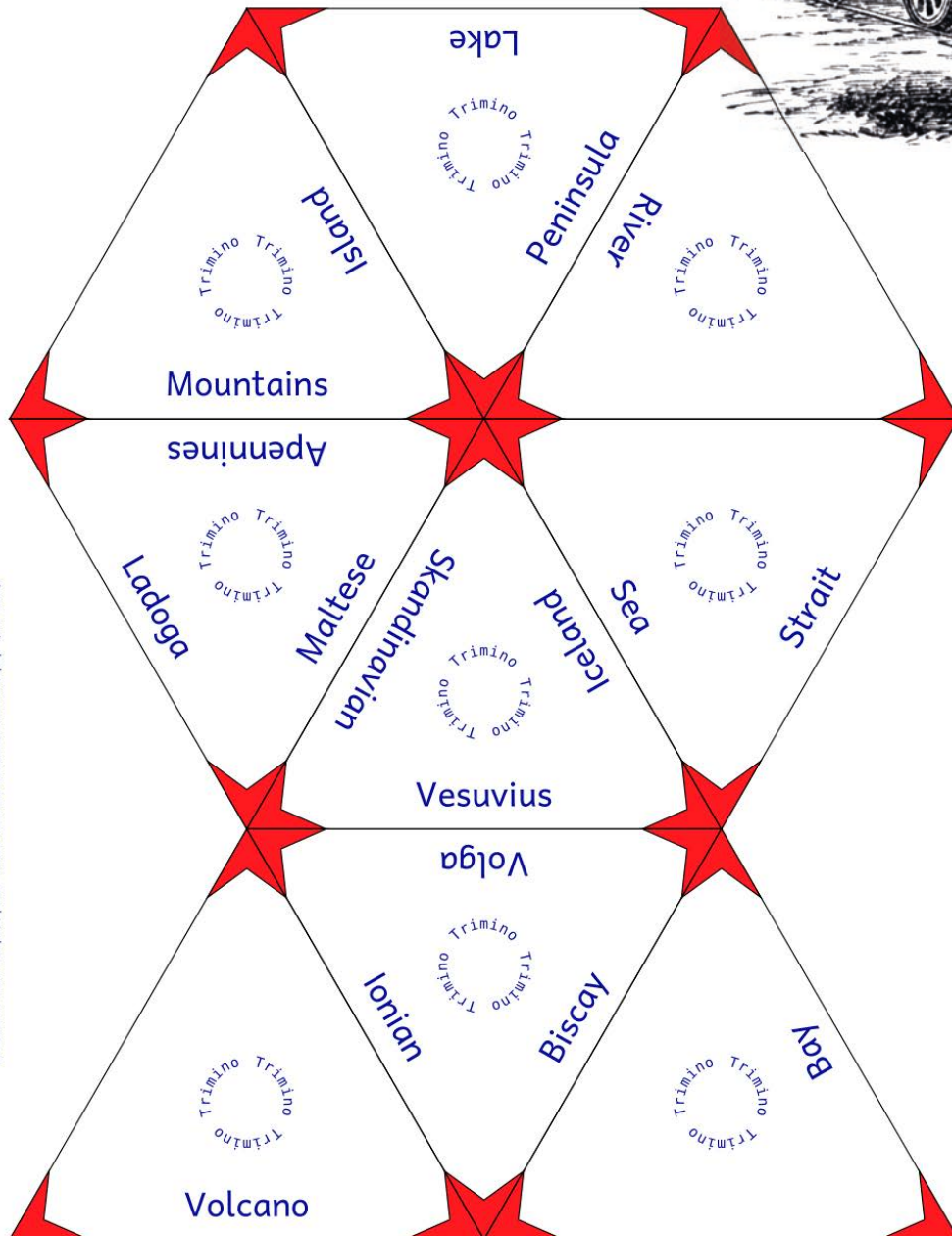
Then I continued on the train. I stopped at the train station with a tropical garden. I saw many exotic plants there, such as palms, dates, banana trees. I looked at the collection of paintings at the Prado Museum.



Source: <https://www.bryla.pl/bryla/7,85298,24890130,atochadzungla-w-dworcowej-hali-tak-to-sie-robi-w-madrycie.html>



Sitting in the shade of a banana tree, I have put together a task for you.



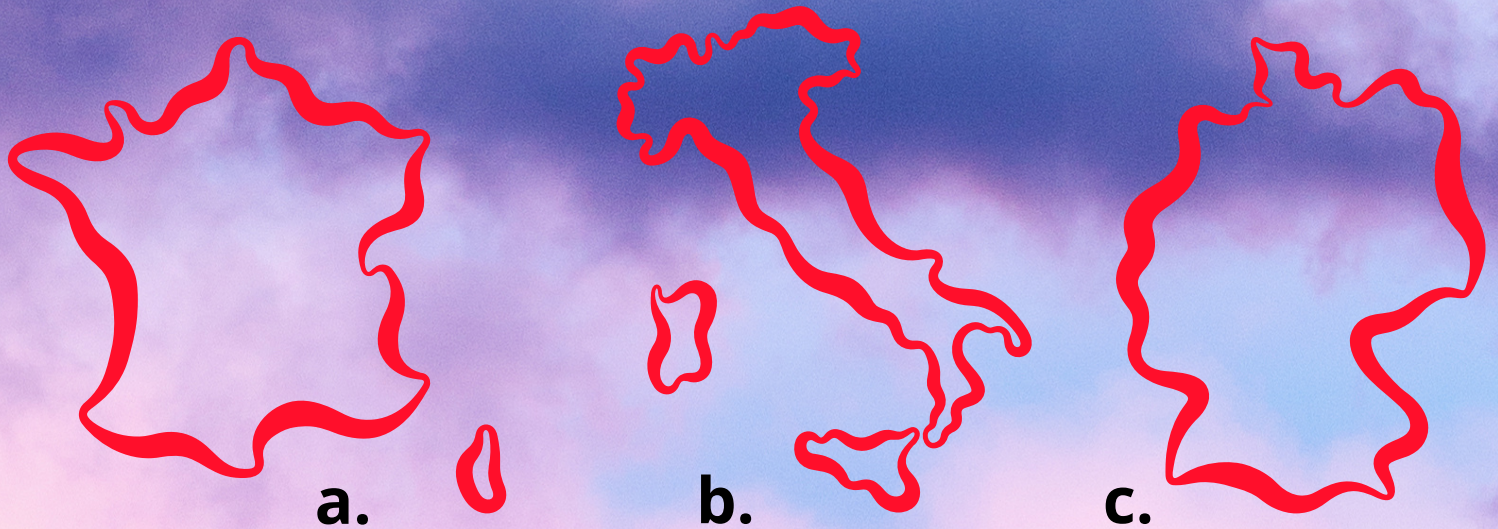
TRIMINO.
Copy onto A4,
cut and fit to each other
geographic features
What came out?

TRIMINO
Trimino cubes have the
shape of equilateral
triangles. You have to
arrange them so that
they all fit together
three walls
each of the triangles.

I love to fly by plane, so with this means of communication I went to the capital, where I made a cruise on the Danube.

Task 10

Recognize the contours of European countries, enter their capitals and coordinates.



The next stop on my journey was the capital, where I got lost at the central station. Entering from the station, I saw the Palace of Culture. And suddenly I woke up. I found a piece of paper under the pillow with two tasks on it.

Task 11

On the geographic map, mark the route he traveled in the journey of his dreams.

Sources: <https://www.geografia24.eu/>
<https://www.podrozepoeuropie.pl>
<https://polskazachwyca.pl>
<https://podroze.gazeta.pl/podroze>
<https://www.superkid.pl/>
Planeta Nowa, Zeszyt ćwiczeń z geografii dla klasy 6, Nowa Era
Planeta Nowa Podręcznik do geografii dla klasy 6, Nowa Era
Atlas geograficzny Polska, kontynenty, świat Nowa Era




Task 12

Combine the picture with the capital and the country.



Made by: Aleksandra Szymuś

Canoeing on the Lena River

I have planned to start my adventure on the Lena River on my birthday, May 1st. I cannot go by canoe earlier, because the river is frozen for half a year. My plan is to  cover 4320 km



in 63 days. I present you the itinerary in points, but if you want to know the route in detail, you will have to solve several tasks.

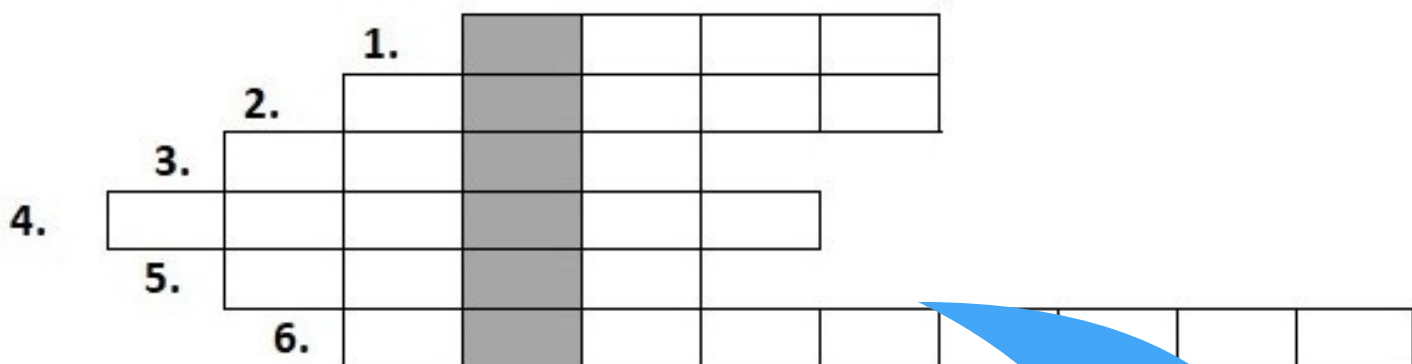
1. I have planned the beginning of the trip in the Balkan-Lena Reserve where the river flows out.

Exercise 1. If you subtract the number 1057 from the peak of Kasprowy Wierch, you will find out at what altitude Lena flows out.

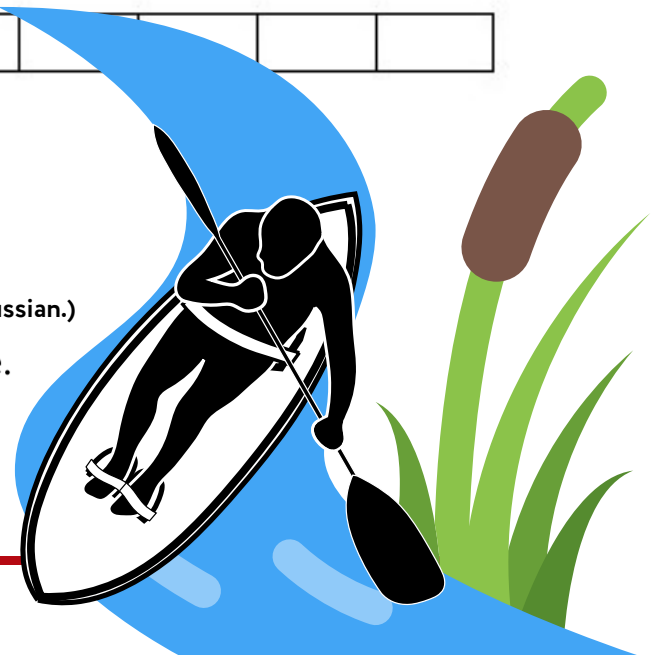


2. After some time I will see a huge water reservoir.

Exercise 2. If you want to find out its name, solve the crossword puzzle.



1. The currency in Thailand.
2. A country with capital in Tokyo.
3. The largest continent.
4. With the capital in Russia. (The actual name of the city in Russian.)
5. Mountains on the border between Asia and Europe.
6. The capital of Mongolia.



Interesting fact:

- Bajkal is the deepest lake in the world.
- It reaches 1642 m deep.
- Bajkal is home to 1,550 animal species.
- Bajkal is a basin for about 350 rivers.
- 27 rocky islands protrude from the lake.



3. The next point of my trip will be a very famous city.

Exercise 3.

I will not give you its name. If you are interested, I will give you the geographical coordinates: 52° 17'N, 104° 16'E.

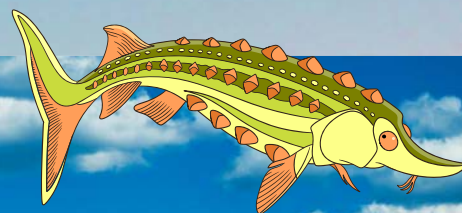
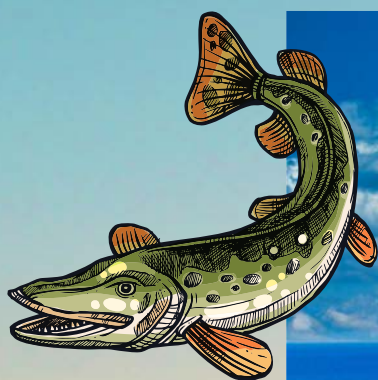
4. The next stage of my trip will be sailing through the natural park.

Exercise 4.

If you want to find out its name, solve the puzzle. Cross out the names of the animals that inhabit Bajkal. The remaining letters will indicate the name of the park.

Animals names: OKOŃ, CYRANECZKA, FOKA, OMUL, GOŁOMIANKA, JESIOTR, SZCZUPAK.
(Password will be in polish)

LESZCZUPAKŃOKOŃSKOMULIEFOKASGOŁOMIANKAŁUJESIOTRPCYRANECZKAY



Interesting fact:

-The nature park stretches over 180 km of the middle section of the Lena River, starting south of Yakutsk. In total, the park covers an area of 1,387,000 ha.

-The most important objects in the park are rock formations in the shape of huge columns, 100 to 200 meters high, arranged in irregular clusters on the right bank of the river.

-It is also worth knowing that the park is considered to be one of the most important sources of knowledge about the beginning of the geological epoch known as the Cambrian.



Foto: Podróże Onet



5. After leaving the park, I will see another city.

Exercise 5.

If you change the first 2 letters of the city name from point 3 to "JA", you will find out which city it is.

Interesting fact:

- Region with the record of the lowest temperature for a habitat inhabited by humans.

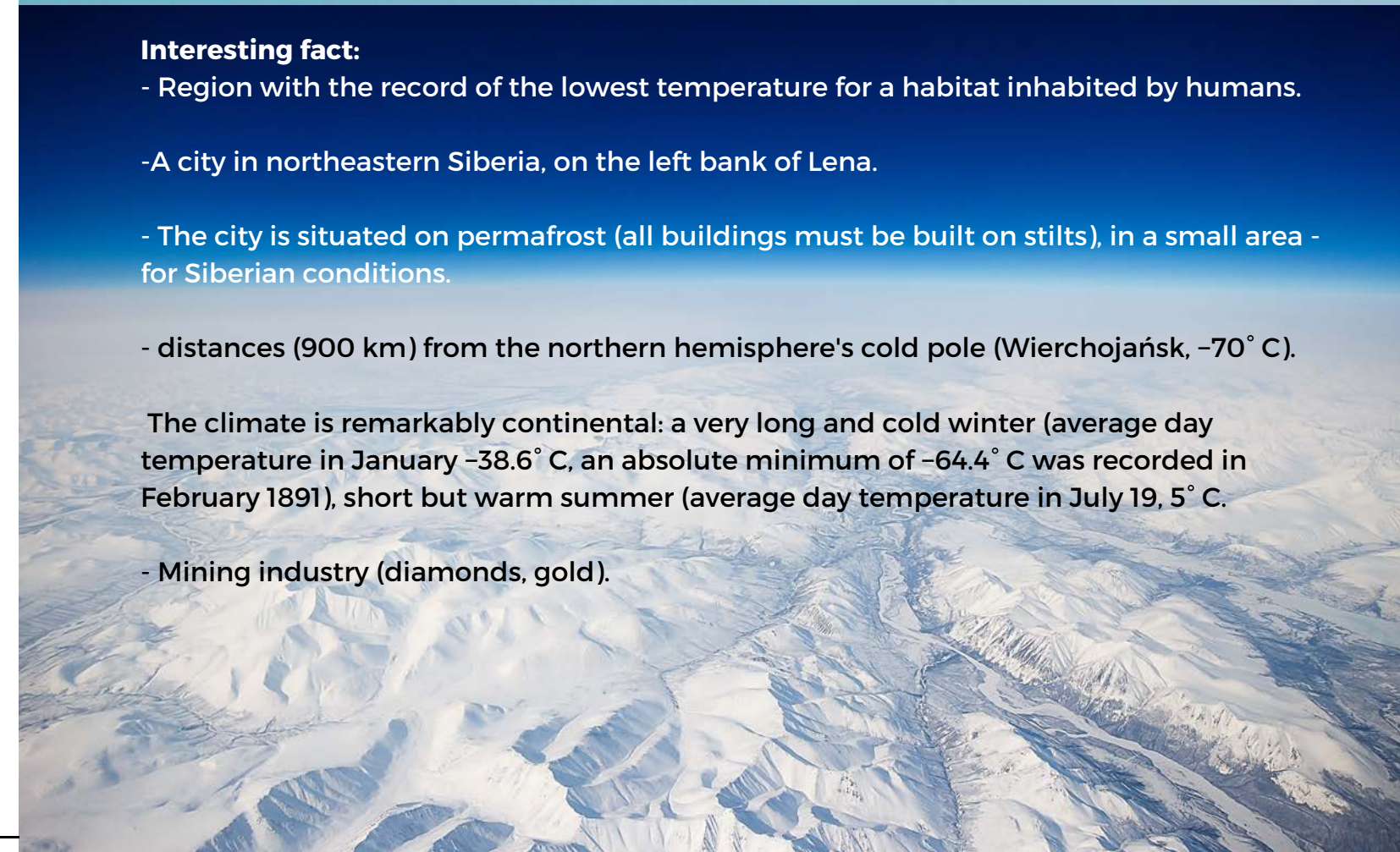
-A city in northeastern Siberia, on the left bank of Lena.

- The city is situated on permafrost (all buildings must be built on stilts), in a small area - for Siberian conditions.

- distances (900 km) from the northern hemisphere's cold pole (Wierchojańsk, -70°C).

The climate is remarkably continental: a very long and cold winter (average day temperature in January -38.6°C , an absolute minimum of -64.4°C was recorded in February 1891), short but warm summer (average day temperature in July 19, 5°C).

- Mining industry (diamonds, gold).



6. After another 400 km you can see the longest tributary of the Lena.

Exercise 6. If you solve the rebus and you will find out what river it is.



← + UJ

(Password will be in Polish)

Interesting fact:

- Left tributary of Lena
- Length 2650 km
- Mouth to Lena, 64° 22'N, 126°24'E
- In the basin deposits of diamonds, hard coal, natural gas.



7. The next stage of my journey will be sailing along with Góry Wierchojańskie

Exercise 7. I consciously give the name in Polish, your task is to translate it into English.

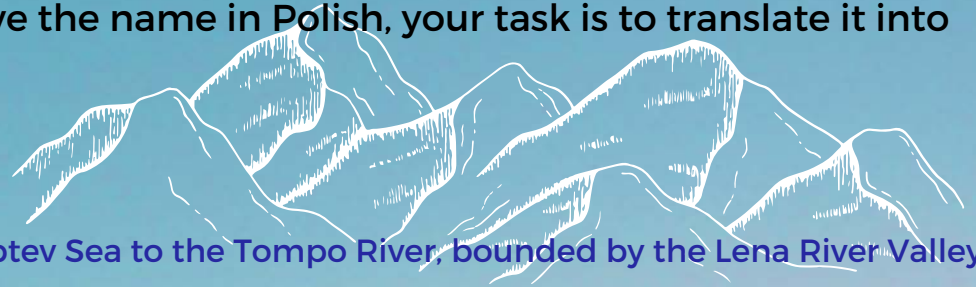
Interesting fact:

-67°00'N, 129°00'E

-A mountain chain from the Laptev Sea to the Tompo River, bounded by the Lena River Valley to the west

-The highest peak at an altitude of 2389 m above sea level

-The mountains are approximately 1,200 km long. The peaks are rocky and sharp with little glaciers



the Lena River



8. As I approach the end of the journey, I still have to sail through ...

Exercise 8. If you want to find out by what, solve the math problem.

(Password will be in polish)

--	--	--	--	--	--

3 4 2 4 5 7

--	--	--	--	--	--	--	--	--	--	--	--	--	--	--	--	--	--	--	--

12 6 1 9 8 1 3 1 10 4 13 11 6 4 14 10 8 7

$$1568^0 - O$$

Druga liczba parzysta- Ż

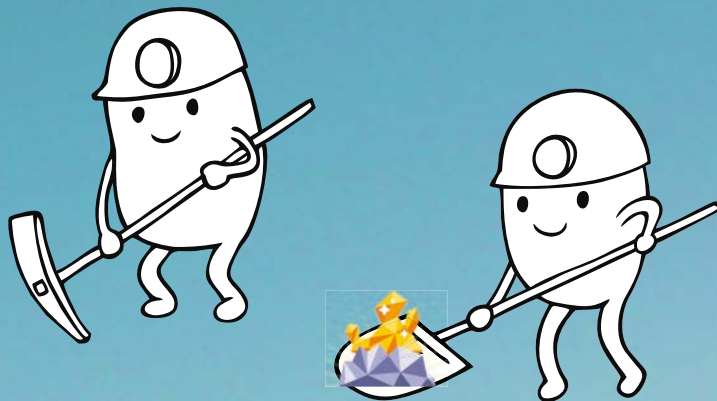
$$\sqrt[3]{27} - W$$

$$\sqrt[2]{16} - Y$$

$$\sqrt[3]{125} - N$$

740736:123456- R

Czwarta liczba pierwsza- A



$$2^3 - K$$

$$3^2 - D$$

Ile jest milimetrów w centymetrze- S

Piąta liczba pierwsza- E

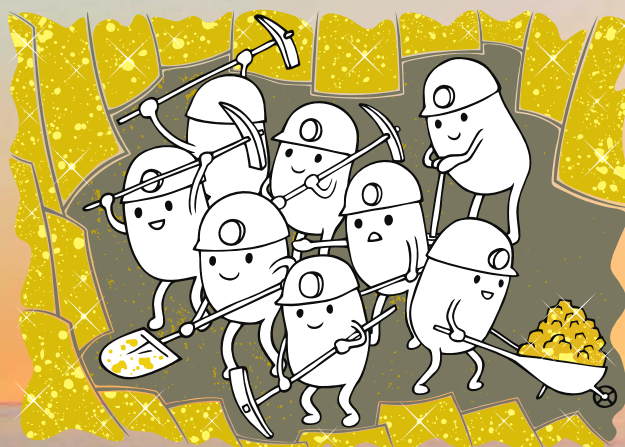
$$\sqrt{144} - Ś$$

Szósta liczba pierwsza- B

$$\sqrt{196} - J$$

Interesting fact:

- It's between Yenisei and Lena
- Maximum altitude 1701 m above sea level
- It is the world's largest opencast diamond mine
- The hole is 1,200 meters in diameter and 525 meters deep. To get from the surface of the earth by car to its deepest point, you need two hours!
- The largest diamond was found on December 23, 1980, it had as much as 342.5 carats and weighed 68 grams.



9. The penultimate point of my journey is ...

Exercise 9. You will find the answer in a puzzle. Cross out the names of the tributaries of Lena. The remaining letters will form the password.
(Password will be in polish)

LINDE, MOŁODO, AŁDAN, WITIM, WILUJ, OLOKMA, MUNA.

WILUJGMUNAÓRLINDEYCMOŁODOZEKAŁDANANWITIMOWSKOLOKMAIEGO

Interesting fact:

- The range of hills to the west limits the Lena Delta, up to 529 m high, covered with a rocky tundra. Discovered by a Pole, Aleksander Czekanowski, the length of the chain is approximately 320 km.

10. I will end my trip in a beautiful place, which is on the UNESCO World Heritage List.

Exercise 10. Enter the coordinates so that it would be easy for you to find the answer where

I ended my journey: 72°24'N, 126°41'E.



<https://pl.wikipedia.org/wiki/>

Author: Maksymilian Królik

Sources:

- <http://wyprawy-gienieczko.blogspot.com/>
- <https://lachmanski.pl/rejs-rzeka-lena/>
- <https://www.panstwaswiata.pl/rzeki/lena/>
- <https://paulturner-mitchell.com/pl/90682-gde-na-karte-nahoditsya-reka-lena-reka-lena-na-karte-rossii-kuda-vpadaet-reka-lena.html>
- <https://ekonomiaglobalna.eu/lena-najdluzsza-rzeka-rosji/>
- <https://blog.transsyberyjska.pl/10-faktow-o-jeziorze-bajkal/>
- <https://coppershop.ru/pl/hozyajke/kakoe-zhivotnoe-obitaet-tolko-v-baikale-zhivotnye-i-ryby-baikala.html>
- <https://pl.wikipedia.org/wiki/Irkuck>
- <https://pl.wikipedia.org/wiki/Jakuck>
- <https://en.wikipedia.org/wiki/Oymyakon>
- [https://pl.wikipedia.org/wiki/Park_Narodowy_\"Słupy_Leńskie\"](https://pl.wikipedia.org/wiki/Park_Narodowy_\)



In June I took part in a geography competition about knowledge of Asia. I was determined to study a lot because I love the culture of that continent. The prize was a train journey around the Asia. My dreams came true, and I finally was able to visit my favourite continent. Let me take you with me on my beautiful journey.

Please scratch my way on the map and you will find all the phases of my trip.

1) My trip started in the capital of Poland, which is the biggest city in this country. Its geographical coordinates are $52^{\circ}11'N$, $21^{\circ}46'E$. Through this city flows The Vistula River, which is the longest river in Poland.


Exercise 1. To go to the next point, you must answer a question-
How do we call a landform surrounded by water around most of its border while being connected to a mainland from which it extends?

2) My first stop was the biggest p ***** in the world. I stayed in the capital of the Saudi Arabia, which has nearly 5.2 millions residents. This amazing place is divided on 17 districts. City I've visited has a hot desert climate, it is also known for having dust storms. Its geographical coordinates are $24^{\circ}41' N$ $46^{\circ}43' E$.

Exercise 2. To go to the next point, you must answer a question-
What is the height of the highest mountain in the world?

3) Then I arrived to the foothills of the biggest top in the world. It has about **** meters high. This top belongs to the highest mountain range in the world. Its geographical coordinates are $27^{\circ}59'N$, $86^{\circ}55'E$. I stayed in the same country, but I moved to a place which has the least rainfall each year it's only 20 millimetres per a year.

Count the temperature on the world's highest top (8848 m)
when on high of 1500 meters the temperature totals $7^{\circ}C$.



Exercise 3. To go to the next point, you must answer a question-
Which River is the longest one in Asia and how long is it?

4) My next stop was the mouth of the longest river in Asia into the Yellow Sea. This river is *,** kilometres long. From where I had a ferry to the highest active volcano in Asia. I was able to see that the ground near this volcano is very fertile, so it's great for agriculture. Its geographical coordinates are $56^{\circ}4'N$, $160^{\circ}38'E$.

The longest River in Asia is 6300 kilometres long.
What would be its length on the map in scale 1:10 000?

Exercise 4. To go to the next point, you must answer a question-
Which Lake is the deepest in Asia and how deep is it?

5) Then I had a short ferry to the land and after that I had a train to the deepest lake in the world- **** meters deep. It isn't the biggest lake in Asia because it's second in terms of the size. I have never seen a lake this big before. From a local, older man, I found out that this lake freezes during winter and it lasts until May. People can walk on it and even big cars are able to drive through it. Its geographical coordinates are between $51^{\circ}29'$ and $55^{\circ}46'N$ and between $103^{\circ}44'$ and $109^{\circ}55'E$.

Exercise 5. To go to the next point, you must answer a question-
Which is the capital city of the country with this flag?

6) My last stop was in the capital city of *****. It was founded in 723 year by the Gunakamadeva King. This city has many old and beautiful Hindu and Buddhist temples. Together with the Patan and Bhaktapur cities they form an agglomeration of over a million residents. This city is the main industrial centre in the country. Its geographical coordinates are $27^{\circ}42'N$, $80^{\circ}20'E$.



Unfortunately, it was the last phase of my trip, but in this city, I had an honour to meet and learn a little bit about a life of a young goddess.



Exercise 7. To go to the next point, you must figure out the rebus.



+



Kwat
(Chinese fruit)

el

*****- is the Nepalese alive goodness

Read the text about Kumari and solve the crossword.

Good luck



Kumari (Kumari Dewi) – Nepalese alive goddess. Word “kumari” in Nepali means “virgin”. Kumari is a young girl, who hasn’t come into the adolescence yet. Goodness is specially selected and considerate as an incarnation of the goddess Taleju, until the girl’s first period when the goodness leaves her body. Believers also believe that a girl’s serious disease or a big loss of the blood, is the sign that Goodness has left her body. Kumari is revered by the Nepalese Indus and Buddhists. The most known is Royal Kumari from Kathmandu. The Kumari selection process is particularly rigorous. Currently Goodness Kumari is Trishna Shakya, who was elected in 2017, she’s also sister of the previous Kumari. Once Taleju has left the sitting Kumari, there is a frenzy of activity to find her successor. The selection process is conducted by five senior Buddhist Vajracharya priests, the Panch Buddha, the Bada Guruju or Chief Royal Priest, Achajau, the priest of Taleju and the royal astrologer.

Eligible girl must be in excellent health, never have shed blood or been afflicted by any diseases, be without blemish and mustn’t have lost any teeth yet. Girls who pass these basic eligibility requirements are examined for **the battislakshanas**, or **thirty-two perfections** of a goddess. Some of these are poetically listed such as: * a neck like a conch shell, * a body like a banyan tree, * eyelashes like a cow, * thighs like a deer, * chest like a lion, * voice soft and clear as duck’s.

In addition to this, her hair and eyes should be really dark also she should have dainty hands and feet and a set of twenty teeth.

The girl is also observed for signs of serenity and fearlessness, and her horoscope is examined to ensure that it is complementary to the king's. It is important that there not be any conflicts, she must confirm the king's legitimacy each year of her divinity. Her family is also scrutinized to ensure its piety and devotion to the king.

In next test, girl must spend a night alone in a room among the heads of ritually slaughtered goats and buffaloes without showing any fear. After passing all other tests, the last one is that she must be able to pick out the personal belongings of the previous Kumari from an assortment of things laid out before her. If she is able to do it there is no remaining doubt that she is the chosen one. Kumari must be really brave and strong, she cannot show any weakness or fear. Which is extremely hard because she’s only a young girl.

1.				K					
2.				U					
3.				M					
4.				A					
5.				R					
6.				I					
7.				G					
8.				H					
9.				A					
10.				R					



1. Kumari's voice has to similar to....voice
2. Whose incarnation is Kumari?
3. Where is from the most known Kumari?
4. Kumari must be in an excellent...
5. What does word "Kumari" means?
6. What is the name of the current Kumari
7. Among whose heads in the room Kumari must spend the night?
8. Kumari should have twenty.....
9. Kumari should have thighs like...
10. What is like the Kumari selection process?

! password! ---> Using internet explain what it is

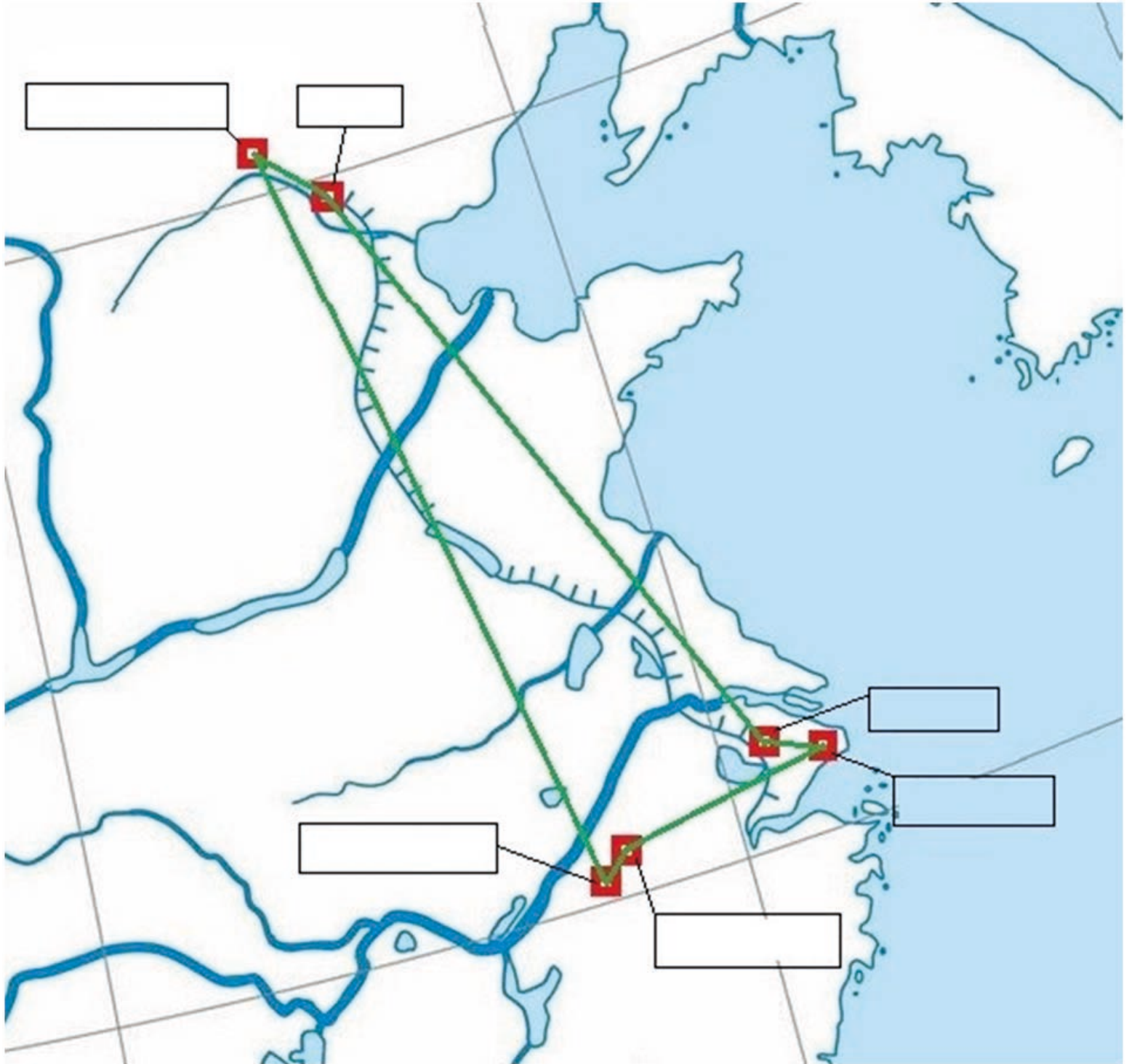
Sources: <https://www.national-geographic.pl/artukul/traca-dziecinstwo-zyskuja-boska-czesc-kumari-zywe-boginie-z-nepalu>

Made by: Oliwia Kapitan



Plan for a 10-day tour of Eastern China

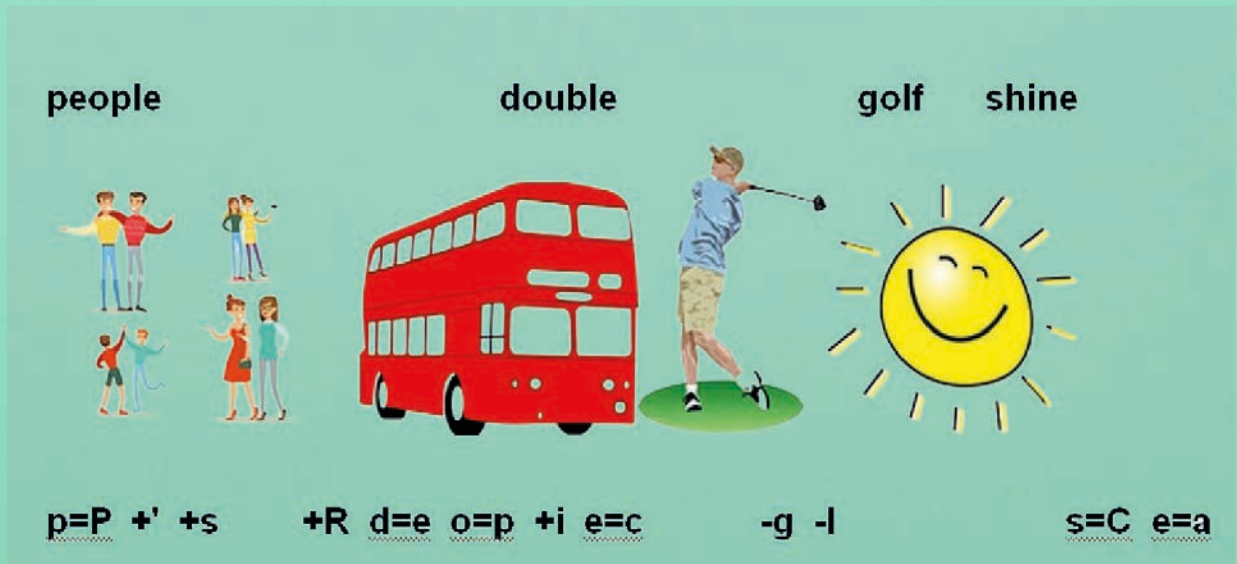
As you go through the tour itinerary, keep describing the places you visit, indicated by the red squares on the map below.



DAY 1

Gather at the Warsaw airport. Direct flight by Dreamliner (Boeing 787) from Warsaw to your final destination. Estimated flight time: 8 hours 18 min. (at aeroplane speed of 800km/h)

Solve the riddle and you will find out which country you will fly to.



DAY 2

Visiting the capital, where the famous stadium called the Bird's Nest is located. The city is a fascinating mixture of hyper-modernity, glass skyscrapers and quiet alleys with wonderful traditional architecture. There is also the Temple of Heaven. What city is it about?

Task 1

Mark the given geographic coordinates on the contour map. What city is it?

Latitude 39 ° 54' N
Longitude 116 ° 23' E

Task 2

If it is 12.00 local time in Warsaw, what time is it in a city whose longitude is 21°E?

Data:

Longitude of Warsaw: 21°E (this is the origin meridian)

Longitude of the city you are looking for: 116°E

Warsaw local time 12.00

Searched for:

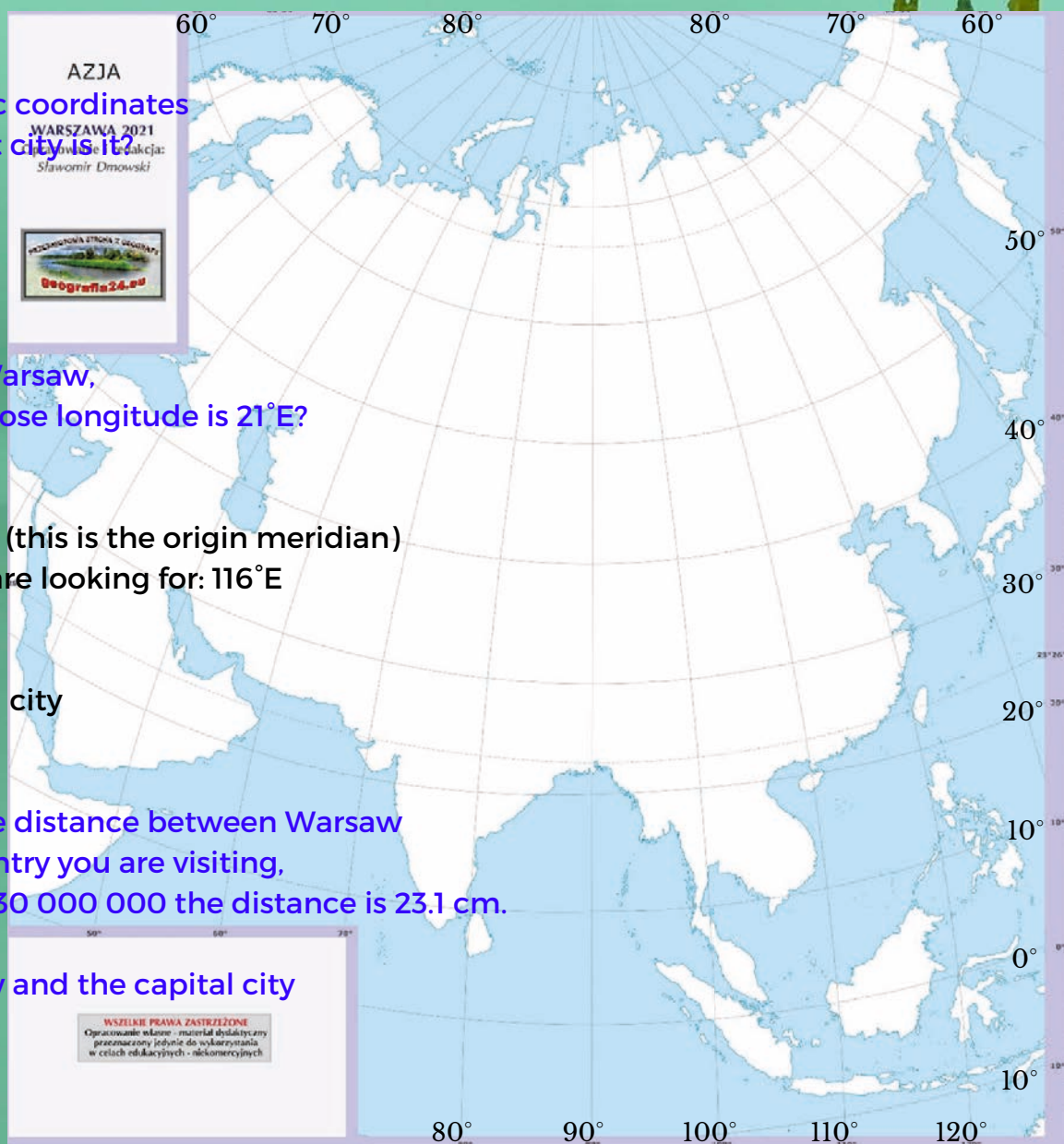
Local time of the searched city

Task 3

Calculate the approximate distance between Warsaw and the capital of the country you are visiting, if on a map on a scale of 1:30 000 000 the distance is 23.1 cm.

Searched for:

Distance between Warsaw and the capital city



Interesting fact :

Swallow nests are one of the most elaborate and expensive products of regional cuisine. In fact, the swift, not the swallow, builds these unusual habitats from its own salivary glands. The nests, boiled for over three hours in water for more than three hours, they disintegrate into gelatinous filaments, which are used to prepare an exquisite soup with a spicy aroma. Chinese emperors claimed that this dish ensures eternal youth. A kilo of nests costs around 3,500 euro.



DAY 3

What is the name of the largest public square in the world? It is where you will start today's tour.

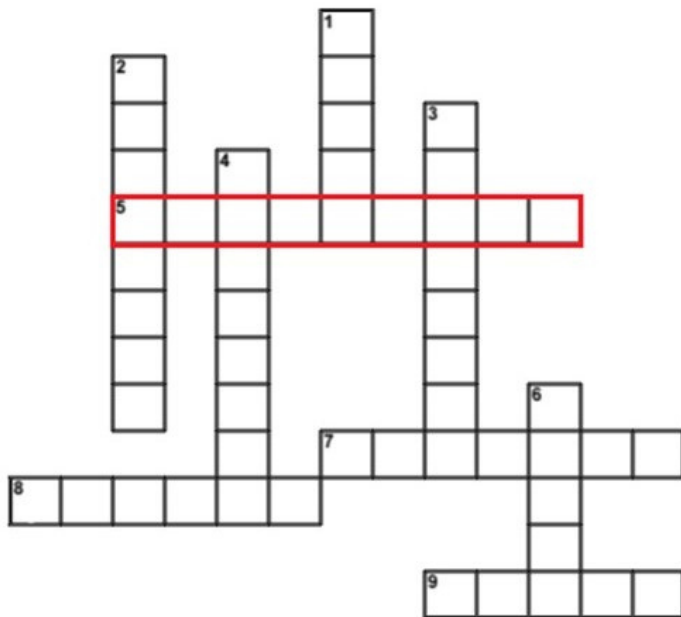
Continue to the Forbidden City, whose entire complex has 9,999 and a half rooms, as 10,000 rooms can only have, according to Chinese tradition, a palace in heaven. Visit to the Imperial Palace. Free time in the gardens of the Forbidden City, followed by a walk in the Park (what park do you think it is?), which is an oasis of greenery and tranquillity in the heart of a bustling metropolis. Next, a rickshaw ride through the city's traditional neighbourhood known as the hutongs.



DAY 4

Solve the crossword and you will find out what will be the next attraction you will visit.

Solve the crossword puzzle and you will find out what is the next point of our trip



Poziomo:

- 5. The longest and largest man-made structure in the world
- 7. A resident of China, a man of Chinese descent
- 8. The longest river in China
- 9. An animal recognized as a national treasure in China

Pionowo:

- 1. The highest peak in China (... Everest)
- 2. The most popular sport in China
- 3. The most populous city in China
- 4. Political system of China
- 6. The capital of china

Go to It is about 8500 kilometres of defensive fortifications, although its real length is still unknown. Parts of the wall, breached over time, were reconstructed and inscribed on the UNESCO World Heritage List in 1987. Next, drive to the Summer Palace, built by order of Empress Cixi. The palace has impressive gardens, nearly 3,000 pavilions and a picturesque lake. Stroll along the famous Long Gallery. Then a short cruise on the lake, from where you can enjoy views of the surrounding hills and palace pavilions. On the way back, a stop at the Olympic Park. The next point of the trip is the Kung-Fu Show - a very interesting display of Chinese martial arts, the world of Buddhist monks presented in a setting of great music and colourful scenery.



airport

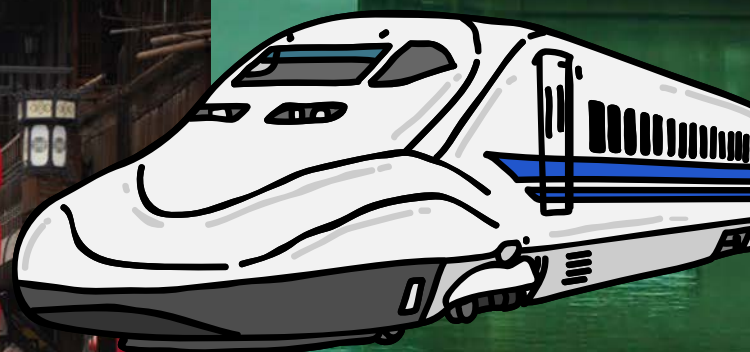


DAY 5

Solve the rebus and you will find out the name of the next city.

+H +U a=A i=N r=G p=S o=H r=A t=N

Transfer to the railway station and take the super-fast train to the town picturesquely located at the foot of the Yellow Mountains. Stroll through the charming Old Town, the historic Tunxi Street.



meal

country

DAY 6

Solve the rebus and you will find out what the next stage of the tour is.



m=Y a=l +o +w c=M +a +i r=n y=s

A full-day trip to which, due to their unique nature, has been entered on the UNESCO list. For hundreds of years, these mountains have been one of the leading themes of Chinese painting. This place is famous for its vegetation (endemic pine), characteristic, jagged and pointed peaks and the phenomenon known as the "sea of mists". Do you know the name of the highest point of this place, reaching 1864 m above sea level?

Then drive to the small town of Yungusi, where the mountain railway has its station. Go up the cable car, unforgettable walk in the mountains. Walk along the scenic route "North Sea" to the pass "West Sea" and return.



DAY 7 The next stage of the trip is the most populous city in China with a population of over 26 million. It is home to the Jade Buddha statue. It is home to the famous Temple, which houses a department lit up by hundreds of neon lights, with countless shops and restaurants. Which city is it? The main shopping street - Nanjing Street - is it?



Task 6

Find the city of Shanghai on the map (Physical Map of the World - "other map - with borders of countries, captions of countries, capitals and major cities and other objects" - Asia) and give its approximate geographical coordinates.

DAY 8

Solve the rebus and you'll find out what the next attraction you visit will be.

Full day trip to the famous silk production centre. The place is famous for its picturesque canals and fairytale gardens, listed by UNESCO and already admired by Marco Polo. Visit to the Master's Garden of the Net. Visit to a silk factory and learn about the production process. Drive to so called "water village". Boat trip on the canals of the village. Return.



s=z + o i=u



Task 7

On the map (Physical Map of the World - "practice, contour - with hydrography" - Asia) there are 3 cities situated along the Yangtze River. From among the names of the cities listed below, choose the correct ones and match them.

- | | |
|-------|-----------|
| Makau | Chongqing |
| Pekin | Chengdu |
| Wuhan | Nankin |
| Xi'an | |



DAY 9
Visiting the Temple -  -
one of the most important Lamaist temples in this part of China. It houses the world's largest Buddha statue carved in a single piece of wood. Which city is it?



Sources:
<https://www.krzyzowki.edu.pl/generator.php>
<https://www.rebusy.edu.pl/>
<https://www.geografia24.eu/>
http://www.transazja.pl/atlas/1816670/zwiedzanie/4,7/Swiatynia_Nieba
<https://www.wakacje.pl/oferty/chiny/opowiesci-z-chin-509398.html>
<https://fajnepodroze.pl/informacje-ciekawostki-szanghaj/>
<https://planetescape.pl/blog/chiny-wspaniala-podroz-do-panstwa-srodka>
<https://wszedobylscy.com/swiat/chiny/>
<https://obejrzyjswiat.pl/nasze-podroze/chiny/>

DAY 10

Transfer to the airport and departure to ...



End of the journey.
How did you like it?

Made by: Julia Kwaśny




Taiwan

Dear diary,

I'm going to tell you about the amazing stages of the journey I took that week. I was flying from Yemen to Japan. Unfortunately our plane crashed in Taiwan in the jungle. I had a map with me, on which I marked where Yemen, Taiwan and Japan are located. Show these countries on the geographical map.

STAGE 1

I was taken up in the sky when I found my geography note. Unfortunately, some information was in Polish. You have to translate them.

There is humid **zwrotnikowy** climate with monsoon variety in Taiwan. **W lecie** rainfall is high, and in winter **jest sucho i słonecznie**. A characteristic feature of the climate are **huragany**, which in Asia are called **tajfuny**. **Tajfuny** occur at the end of summer and the beginning of **jesień**. Taiwan has three to four **tajfuny** each year. It is an island and on the west side there is **cieśnina Tajwańska**, and to the south **cieśnina Luzon**. In the north we can see **Morze Wschodniochińskie** and in the east **Morze Filipińskie**. There are mostly highlands there, and in a minority of the Taiwan area there are **góry**. Taiwan's highest **szczyt** is  with a height of 3,952 m. Taiwan's capital is Taipei which is one of the most visited cities by tourists, has over 9 milion **mieszkańców**. It is modern and polluted than most Asian metropolises.

STAGE 2

I found out where I landed: 25°02'N, 121°38'E.

Only in one day, I saw the changing of the guard at Chiang Kai-Shek Memorial Hall, I learned Taoist rituals at the Lungshan Temple. I also found myself in the National Palace Museum, where exhibits from over 5000 years of Chinese history are collected. I admired the city skyline from one of the tallest buildings in the world - Taipei 101 Tower. I was also cruising the Shilin Night Market. How was that possible?

Go to the website and watch the city map carefully.
<https://www.orangesmile.com/travelguide/t-ai-pei/high-resolution-maps.htm>

What rivers flow through Taipei?

What parts of the city do the fragments of the following plan come from?



Match the photo with the name and description. Indicate these places on the city map.



a. Longshan Temple b. Taipei 101 c. Night Market

1. Recently, the highest tower, where the fastest elevator is located. It accelerates to 60.6 km/h and takes 37 seconds to travel from the fifth to the 89th floor.



2. A frequently visited place by tourists, as well as residents of Taiwan. In this place you can buy practically anything and it is open until late at night. When it closes, then food stalls are opened.



3. One of the oldest Buddhist temples.



STAGE 3

One day I tried to find out what time it was, but unfortunately no one answered me. Fortunately, I know what time it was in Hong Kong (22°N, 114°E) 9.00, and the place where I was had coordinates 25°N, 121°E. I calculated the solar and zonal time of my position, which was...



STAGE 4

I went to this awesome place, but didn't know the name of it. When I asked someone, he gives me this puzzle. I find out, that I am standing in..... Solve the puzzle and write it in English.

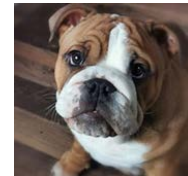


—S—



—Police—icer—

1000



—H— +d og=has

STAGE 5

Complete the description.

This kind gesture of a man made me get acquainted with the culture, customs and people living in this country.

I started by calculating the population density. I knew that 22,200,000 people lived on an area of 35,801 km², which is the density of1..... .

When I satisfied my knowledge of population, I took a closer look at culture. If you visit a Taiwanese house, you should bring a small gift, but you can't bring...2... . It is customary to take off shoes and put on3....4..... starts the meal. It is common to be a buzz in restaurants. Often you can also hear noises ...5.... which indicates that ...6..... was good. In the subway and bus there is prohibition of eating7.... . You can get a penalty for this in the form of8..... .

smacking slippers

meal mandate

130 os/km² ring

food clock

A.
Bath time
in hot springs.

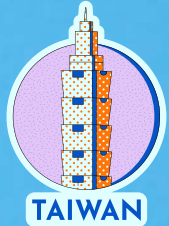
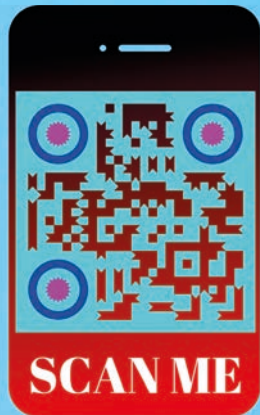
B.
You can find here both
European monuments of the
past, centuries-old Buddhist
and Confucian temples, as well
as a fascinating center of
contemporary culture.

C.
A park surrounded by the Jade Mountains.
Here you will find paths among cedar
trees and a unique alpine temple.

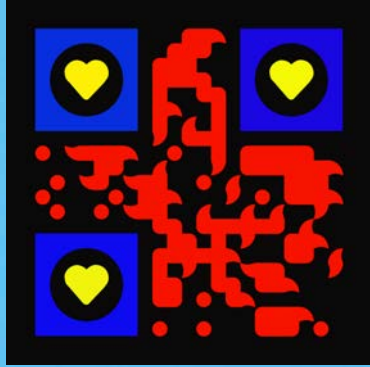
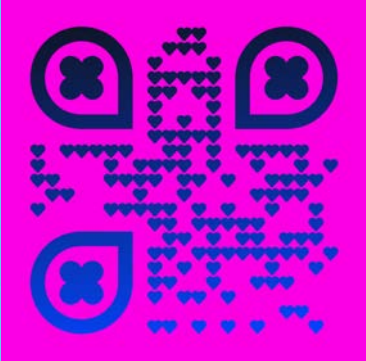
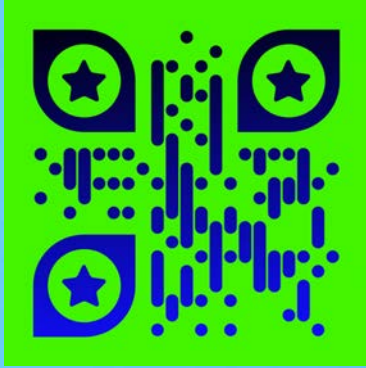
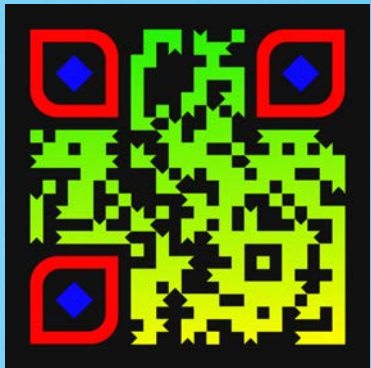
D.
The largest body of water in Taiwan,
a place where - according to legend -
looking at the surface of the lake,
the sun and the moon meet

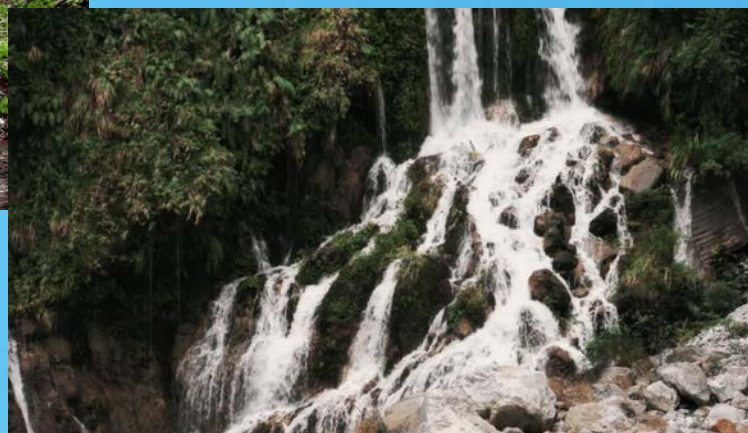
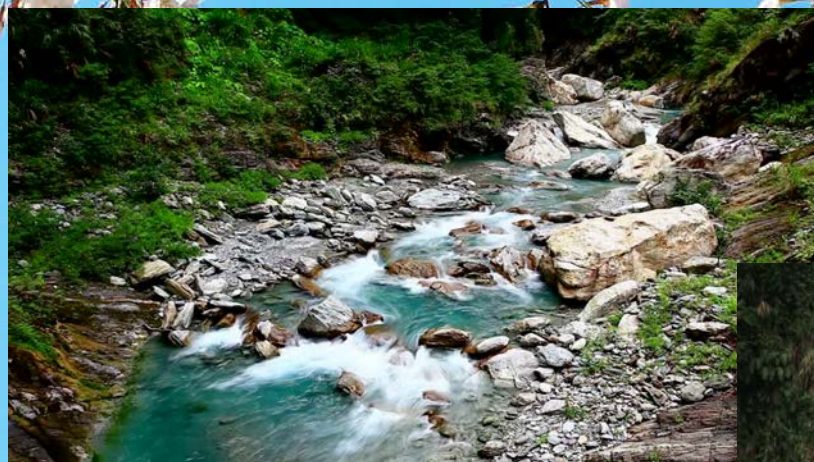
E.
The picturesque river valley,
waterfalls, ravines and lush mountain
peaks create a breathtaking
landscape.

A city where modern
skyscrapers and traditional
Buddhist temples, shopping
centers and night markets
create a unique atmosphere of
this place. **F.**



Assign a description to a name hidden in the QR code.





**What is this place?
Let me mention that it
is located in Taiwan.**

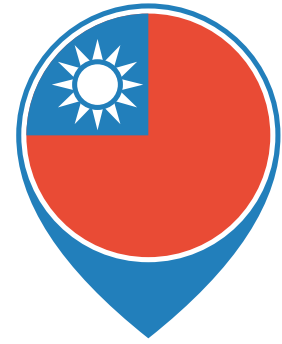


Secret Message

Π Φ Ε Ε Θ δ ♊ Γ ♊

♋	Π	♏	Ε	♏	δ	♋	Λ	ϸ	Ψ	♏	♏	♏
A	B	C	D	F	I	J	K	L	M	N	O	P
♏	ζ	♊	Γ	♏	♏	Σ	Ω	♏	Θ	Φ	♏	♏
Q	R	S	T	V	W	X	Y	Z	?	?	?	?

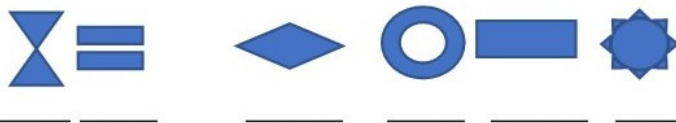
<http://www.theteachersroom.net/secretmessage/secretmessage.html>



STAGE 6

I found a hotel where I wanted to spend the most of the time, but I didn't have much money with me. The cashier offered me a solution to a rebus in one minute. If I can solve, I won't have to pay for the accommodation.

1.



2.



STAGE 7

I solved the puzzle and slept in this hotel. The next day, the same cashier approached me and offered me ticket to my country, in exchange for solving another puzzle.

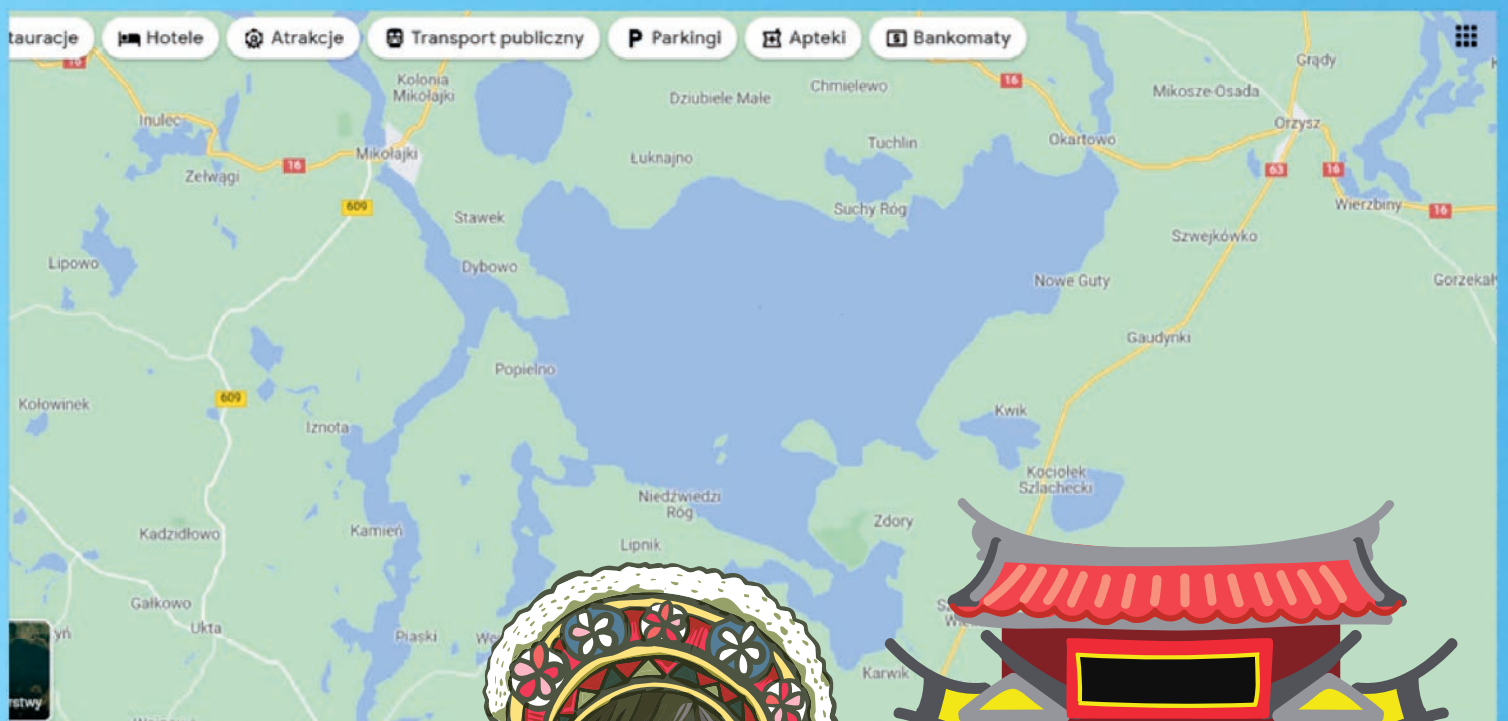
Under the encrypted words, was the name of the highest peak in Taiwan.

Calculate the relative height of a mountain if its altitude is 3,952 meters and I am 455 meters above sea level.

A	B	C	D	E	F	G	H	I
J	K	L	M	N	O	P	R	S
T	U	W	X	Y	Z			

STAGE 8

I safely arrived to Poland, but I was kidnapped. The kidnappers said, that if I will guess the lake in the picture below, they will set me free.
Guess popular lake in Poland, to help me.



-You answered well!
the kidnapper praised
me.

-We will take you home
safely.



Sources:
<https://planetescape.pl/oferta/tajwan-z-wizyta-na-pieknej-wyspie/>
https://pl.wikipedia.org/wiki/Geografia_Tajwanu
<https://www.national-geographic.pl/>
<https://www.orangesmile.com/travelguide/t-ai-pei/high-resolution-maps.htm>

Made by: Joanna Trzeźniak

Zespół redakcyjny:

Oliwia Kapitan
Maksymilian Królik
Julia Kwaśny
Aleksandra Szymuś
Joanna Trześniak

opiekun projektu: Anna Skoczeń
opieka językowa: Hubert Wiktorowicz

Mapy konturowe, które wykorzystaliśmy w gazetce
dzięki uprzejmości ich autora
Pana Sławomira Dmowskiego, znajdziecie na stronie:
<https://www.geografia24.eu/>

W tworzeniu gazetki pomagała nam Canva i jej zasoby.



**Zespół Szkolno-Przedszkolny nr 1
Szkoła Podstawowa nr 7
Al. Armii Krajowej 3
21-040 Świdnik**

Poland
